

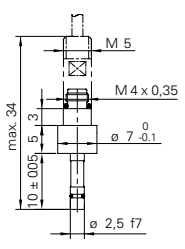
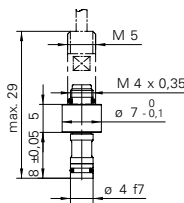
Measure. Control. Optimize.
Tailor-made sensor solutions for cavity
pressure measurement.



Cavity pressure sensors

Direct measuring



Order Code	DPPC DS02.5-2.0	DPPC DS04.0-5.0	DPPC DS04.0-9.4	DPPC DS04.0-9.4/CS1
Description	Direct cavity pressure sensors \varnothing 2,5 mm	Direct cavity pressure sensor \varnothing 4,0 mm Simple sensitivity	Direct cavity pressure sensor \varnothing 4,0 mm Double sensitivity	Direct cavity pressure sensor \varnothing 4,0 mm Uniform sensitivity
Technical Data				
Range	0...2000	0...2000	0...2000	0...2000
Overload	2500	2500	2500	2500
Sensitivity	-2,0	-5,0	-9,4	-9,4 \pm 1%
Linearity	$\leq \pm 1$	$\leq \pm 1$	$\leq \pm 1$	$\leq \pm 1$
Natural frequency	> 80	> 100	> 100	> 100
Opt. temp. range	0...+200	0...+200	0...+200	0...+200
Dimensions (mm)				
				
Cables				
Sensor cable	200 °C	DZCC-ST-MF		
Sensor cable	220 °C	DZCC-HT-MF		
Cable lengths	m	0,2 / 0,4 / 0,6 / 1,0		
Connecting cable		DZCC-04-FB		
Cable lengths	m	2,0 / 4,0 / 5,0		
Mounting accessories				
Mounting tool		DZPC MTHO		
Mounting equipment		DZPC HOFc		
Mounting plate		DZPC HPFC		
Special nut		DZPC MN04		
Mounting wrench		DZPC MWPT		
Spacer tube		DZPC MT04		

Indirect measuring



Order Code	DLPP 6MO-2.5-4.4	DLPP 7MO-010-2.2	DLPP 4MO-030-4.4	DPPC IS06.0-4.4	DPPC IS12.6-4.2
Description	Miniature load cell 2,5 kN	Load cell 10 kN	Load cell 30 kN	Miniature measuring tongue 2,5 kN	Measuring tongue 10 kN

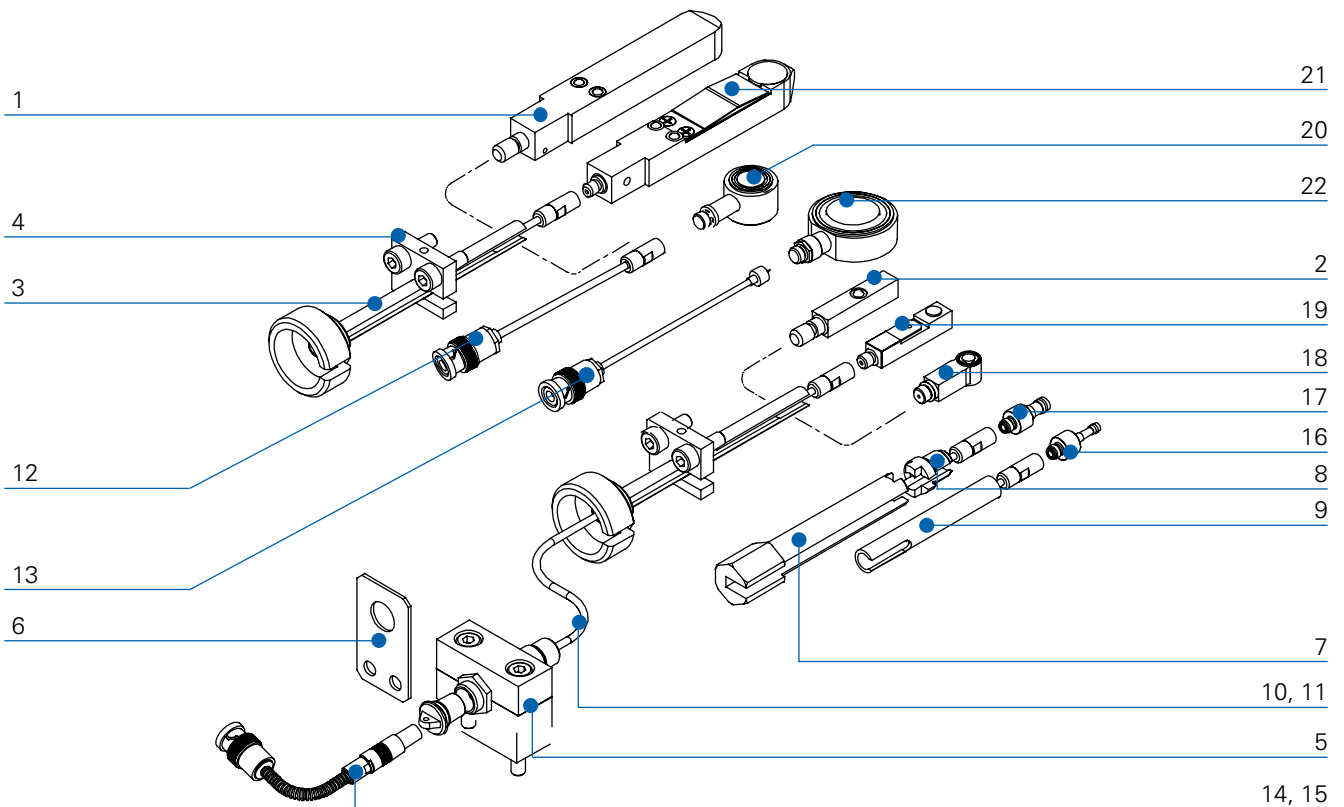
Technical Data						
Range	kN	0...2,5	0...10	0...30	0...2,5	0...10
Overload	kN	3	12	36	3	12
Sensitivity	pC/N	-4,4	-2,2	-4,4	-4,4	-4,2
Linearity	%FSO	$\leq \pm 1$	$\leq \pm 1$	$\leq \pm 1$	$\leq \pm 1$	$\leq \pm 1$
Natural frequency	kHz	> 200	> 80	> 80	> 200	> 60
Opt. temp. range	°C	0...+150	0...+150	0...+150	0...+150	0...+150

Dimensions (mm)					

Cables					
Sensor cable	200 °C				DZCC-ST-MF
Sensor cable	220 °C				DZCC-HT-MF
Cable lengths	m				0,2 / 0,4 / 0,6 / 1,0
Connecting cable					DZCC-04-FB
Cable lengths	m				2,0 / 4,0 / 5,0

Mounting accessories					
Mounting tool					DZPC MTHO
Clamping assembly					DZPC HFMT
Mounting equipment					DZPC HOFC
Mounting plate					DZPC HPFC

Overview accessories and sensors



Pos.	Mounting Accessories	Type
1	Dummy measuring tongue 12 mm	DZPC DT12
2	Dummy measuring tongue 6 mm	DZPC DT06
3	Mounting//Extracting tool	DZPC MTHO
4	Clamping assembly for mounting/dismounting tool	DZPC HFMT
5	Mounting equipment Fischer connector	DZPC HOFC
6	Mounting equipment Fischer connector	DZPC HPFC
7	Mounting wrench	DZPC MWPT
8	Special nut for 2,5 / 4 mm cavity pressure sensor	DZPC MN04
9	Spacer tube for 2,5 / 4 mm cavity pressure sensor	DZPC MT04

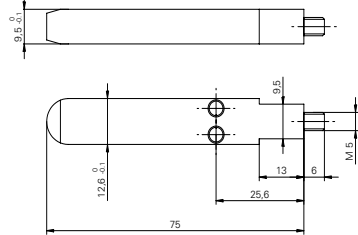
Pos.	Cable	Type
10	Sensor cable 0...+200 °C M4 x 0,35 - Fischer	DZCC ... -ST-MF
11	Sensor cable 0...+220 °C M4 x 0,35 - Fischer	DZCC ... -HT-MF
12	Sensor cable M4 x 0,35 - BNC	DZCC ... -ST-MB
13	Sensor cable UNF 10-32 - BNC	DZCC ... -78-UB
14	Connecting cable Fischer - BNC	DZCC ... -04-FB
15	Connecting cable Fischer - BNC with protecting tube	DZCC ... -HT-FB

Pos.	Sensors	Type
16	Cavity pressure sensor \varnothing 2,5 mm	DPPC DS02.5-2.0
17	Cavity pressure sensor \varnothing 4,0 mm	DPPC DS04.0-x.x
18	Miniature force sensor 2,5 kN	DLPP 6MO-2.5-4.4
19	Miniature measuring tongue 2,5 kN	DPPC IS06.0-4.4
20	Force sensor 10 kN	DLPP 7MO-010-2.2
21	Measuring tongue 10 kN	DPPC IS12.6-4.2
22	Force sensor 30 kN	DLPP 4MO-030-4.4

Mounting accessories

DZPC DT12

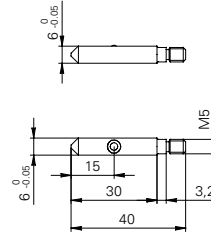
Dummy measuring tongue 12 mm



Mat.: 1.4305

DZPC DT06

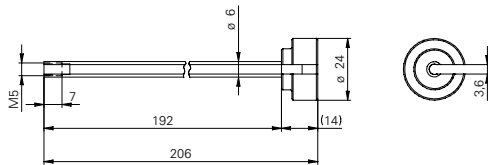
Dummy measuring tongue 6 mm



Mat.: 1.4305

DZPC MTHO

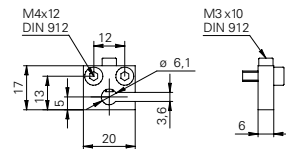
Mounting/extracting tool



Mat.: 1.4305

DZPC HFMT

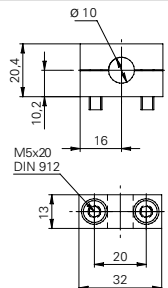
Clamping assembly for mounting/extracting tool



Mat.: Aluminum

DZPC HOFc

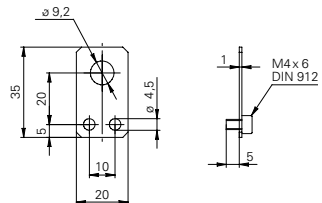
Mounting equipment
Fischer connector



Mat.: Aluminum

DZPC HPFC

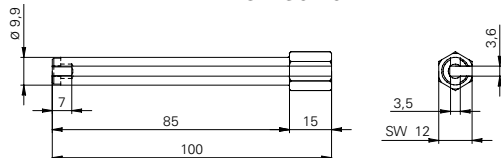
Mounting plate Fischer connector



Mat.: 1.4305

DZPC MWPT

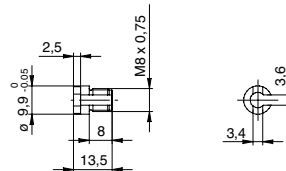
Mounting wrench for
DPPC DS02.5
DPPC DS04.0



Mat.: 1.4305

DZPC MN04

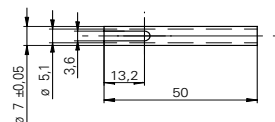
Special nut for
DPPC DS02.5
DPPC DS04.5



Mat.: 1.4305

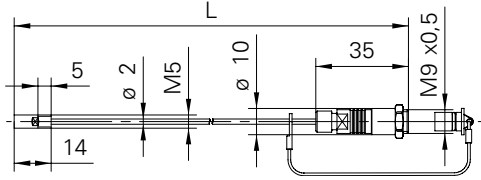
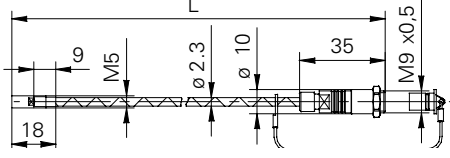
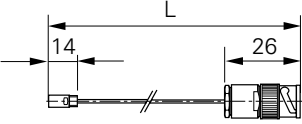
DZPC MT04

Spacer tube for
DPPC DS02.5 (MT04)
DPPC DS04.0 (MT04)

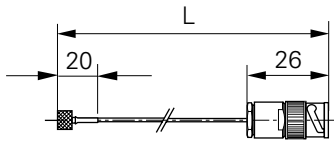
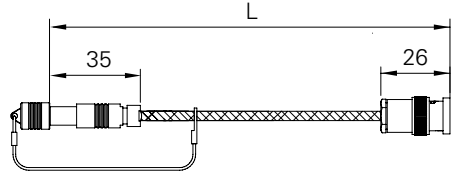
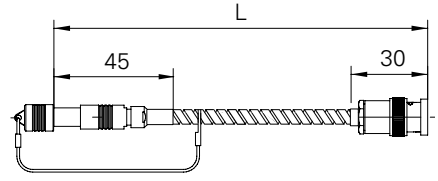


Mat.: 1.4305

Cable DZCC

Sensor Cable		DZCC ...- ST-MF	
L [mm]	Order code	Connector	Connector
200	DZCC 0200-ST-MF	M4 x 0,35	
400	DZCC 0400-ST-MF		
600	DZCC 0600-ST-MF		
1000	DZCC 1000-ST-MF		
Custom length	DZCC xxxx-ST-MF		
Technical data			
Cable	Coax, Low Noise, PTFE/PFA		
Color	blue		
Impedance	50 Ω		
Cable-ø	2 mm		
Bending radius	R5		
Operating temp. range	0...+200°C		
			Fischer Type KE 102 A014
Delivery contents			
• Mounting plate Fischer connector DZPC HPFC			
Sensor Cable		DZCC ...- HT-MF	
L [mm]	Order code	Connector	Connector
200	DZCC 0200-HT-MF	M4 x 0,35	
400	DZCC 0400-HT-MF		
600	DZCC 0600-HT-MF		
1000	DZCC 1000-HT-MF		
Custom length	DZCC xxxx-HT-MF		
Technical data			
Cable	Coax, Low Noise, PTFE/PFA		
Color	steel sheathed		
Impedance	50 Ω		
Cable-ø	2,4 mm		
Bending radius	R8		
Operating temp. range	0...+220°C		
			Fischer Type KE 102 A014
Delivery contents			
• Mounting plate Fischer connector DZPC HPFC			
Sensor Cable		DZCC ...- ST-MB	
L [mm]	Order code	Connector	Connector
1000	DZCC 1000-ST-MB	M4 x 0,35	
2000	DZCC 2000-ST-MB		
Custom length	DZCC xxxx-ST-MB		
Technical data			
Cable	Coax, Low Noise, PTFE/PFA		
Color	blue		
Impedance	50 Ω		
Cable-ø	1,9 mm		
Bending radius	R5		
Operating temp. range	0...+200°C		
			BNC

Cable DZCC

Sensor Cable		DZCC ...-78-UB	
L [mm]	Order code	Connector	Connector
1000	DZCC 1000-78-UB	UNF 10 - 32	
2000	DZCC 2000-78-UB		
3000	DZCC 3000-78-UB		
Custom length	DZCC xxxx-78-UB		
Technical data			
Cable	Coax 178 RG		
Color	brown		
Impedance	50 Ω		
Cable-ø	1,8 mm		
Bending radius	R10		
Operating temp. range	0...+200°C		
Connecting Cable		DZCC ...-04-FB	
L [mm]	Order code	Connector	Connector
2000	DZCC 2000-04-FB	Fischer Type S 102 A014	
4000	DZCC 4000-04-FB		
5000	DZCC 5000-04-FB		
Custom length	DZCC xxxx-04-FB		
Technical data			
Cable	Triax, Low Noise, PTFE/PFA		
Color	transparent		
Impedance	50 Ω		
Cable-ø	3,4 mm		
Bending radius	R10		
Operating temp. range	0...+200°C		
Connecting Cable DZCC ...-HT-FB		DZCC ...-HT-FB	
L [mm]	Order code	Connector	Connector
2000	DZCC 2000-HT-FB	Fischer Type S 102 A014	
4000	DZCC 4000-HT-FB		
5000	DZCC 5000-HT-FB		
Custom length	DZCC xxxx-HT-FB		
Technical data			
Cable	Triax, Low Noise, PTFE, PFA		
Color	metal sheath		
Impedance	50 Ω		
Cable-ø	5 mm		
Bending radius	R30		
Operating temp. range	0...+220 °C		

Charge amplifier

DACU/I 800

Technical Data	
Voltage supply	15 - 35 VDC
13 fixed ranges	100 pC up to 1'000'000 pC
1 variable range	100 pC up to 1'000'000 pC
Adjustable limit value with switching output	
Protection class	IP 40

Order Code	
DACU 800-0.1-1K0BS	Voltage output ± 10 V
DACI 800-0.1-1K0BS	Current output 4...20 mA



DACU 820

Technical Data	
Voltage supply	10 - 40 VDC
2 analog outputs with four selectable ranges:	
4 selectable ranges channel 1	
3 fixed ranges	100'000 pC up to 500'000 pC
1 variable range	100'000 pC up to 500'000 pC
4 fixed ranges channel 2	
4 fixed ranges	2'000 pC up to 20'000 pC
Adjustable limit value with switching output	
Protection class	IP 40

Order Code	
DACU 820-2.0-500BS	Voltage output ± 10 V



Further details can be found at www.baumerelectric.com

Baumer

Baumer United Kingdom

Baumer Ltd. · 33/36 Shrivenham Hundred Business Park
Watchfield · Swindon SN6 8TZ GB
Phone +44 (0)870 161 3000
Fax +44 (0)870 161 3030
sales.uk@baumergroup.com
www.baumergroup.com

Baumer USA

Baumer Ltd. · 122 Spring Street, Unit C-6
US-Southington, CT 06489
Phone +1 (1)860 621-2121
Fax +1 (1)860 628-6280
sales.us@baumergroup.com
www.baumerelectric.com