

Specifications

Model	NHL-3FB1U-RYG	NHL-3FB1N-RYG
Rated Voltage (Body)	DC24V	
AC Adaptor Rated Voltage	AC 100V to 240V	
AC Adaptor Operating Voltage Range	AC 90V to 264V	
Power Consumption	Body	2.0W
	Red	1.5W
Operating Temperature Range	Amber	1.5W
	Green	0.8W
	Blue	0.8W
	White	0.8W
	Buzzer	2.0W
Storage Temperature Range	-10°C to 60°C (No Condensation)	
Relative Humidity	from 20 to 80% RH (No Condensation)	
Insulation Resistance	More than 1MΩ at DC500V between the terminals and the chassis	
Withstanding Voltage	AC1000V and less than 10mA applied for 1 minute between the terminals and chassis without breaking insulation	
EMI Noise Characteristics	AC1000Vp-p Pulse Width: 1μsec	
Vibration Resistance	19.6m/s ²	
Sound Level	HIGH: 80dB or more / LOW: 70dB or less (Distance from buzzer diaphragm (Upright Position) of 1m and "A" balance)	
Buzzer Sound	Three-position adjustable switch for "HIGH", "LOW" and "OFF"	
Signal Tower	NHL : φ60 Type Clear Globe	
"CLEAR" Switch	Pushbutton Switch	
"TEST" Switch	Pushbutton Switch	
"RESET" Switch	Pushbutton Switch	
"BUZZER" Switch	Slide Switch	
Communication Method	Ethernet	Physical Layer: 10BASE-T/100BASE-TX (Auto-negotiation/ Full Duplex/ Half Duplex)
		Data Link Layer: CSMA/CD
		Network Link Layer: IP · ARP · ICMP
		Transport Layer: TCP · UDP
Mounting	Location	Indoors Only
	Direction	Desktop or wall-mount in the upright position
Mass (AC Adaptor not included)	800g	
Protection Rating	IP20 (Not Waterproof)	
Accessories	AC Adaptor, Rubber Feet, Adhesive Seal, Support Base	Rubber Feet, Adhesive Seal, Support Base

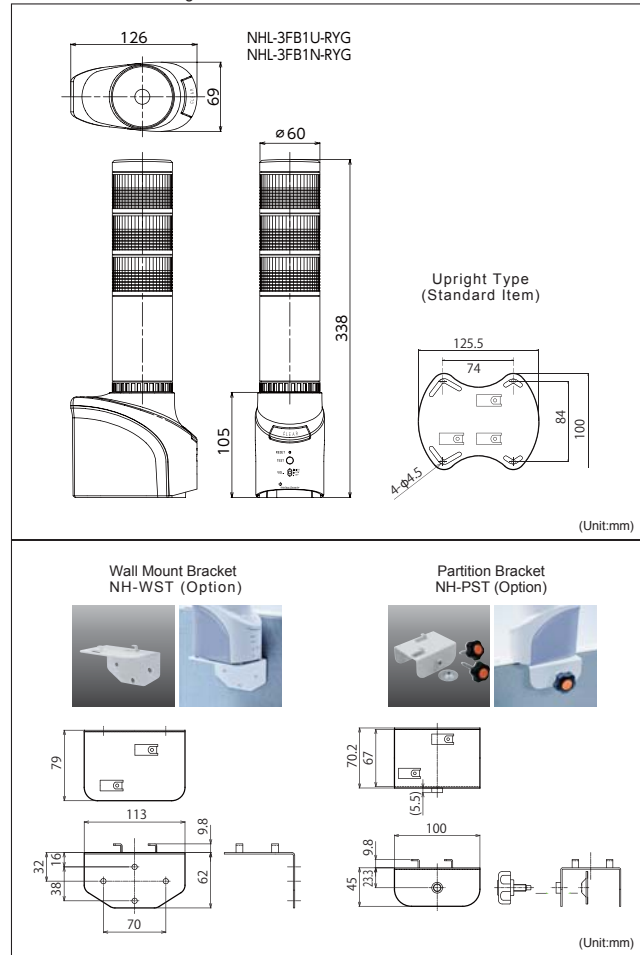
Replacement Parts
By purchasing the replacement parts, the tiers for the NHL model Signal Tower can be increased or decreased.
*Be sure to purchase the correct replacement parts.



Part Name	Part Number
① Cover Seal	T93190007-1F1
② Rubber Feet	T81800007-F1
③ Adhesive Seal (8 pcs.)	T93130009-F1
④ Support Base (Screws included)	T81800019-F1

Part Name	Part Number
Head Cover	B32310027-1F1
Center Shaft 5 Tier	S33552120-04225F1
Center Shaft 4 Tier	S33552120-04180F1
Center Shaft 3 Tier	S33552120-04140F1
Center Shaft 2 Tier	S33552120-04100F1
Center Shaft 1 Tier	S33552120-0455F1
LED Unit Red	B72100168-1F1
LED Unit Amber	B72100168-2F1
LED Unit Green	B72100168-3F1
LED Unit Blue	B72100168-4F1
LED Unit White	B72100167-7F1

Outer Dimension Drawings



PATLITE

New Frontiers in Safety, Security and Comfort.

Signal Tower

For Network & Security Solutions

Network Monitoring Signal Tower

NHL-3FB1U-RYG
NHL-3FB1N-RYG

Network Monitoring With a New Look



Stylish for the Office
More Refined Design

Variety of Monitoring Functions

- PING Device Monitor
- SNMP v1·v2c
- Application Monitor
- Self-diagnosis

Ample Communication Commands

- RSH
- SOCKET Transmission

Setup Function for Detailed Reports

- E-mail Transmission
- SNMP v2c



*AC Adaptor does not carry the CE mark.

PATLITE Signal Tower app for iPhone®!

Confirmation and control of the status for the Network Monitor Signal Tower can be done from a distance.



An iPhone Connectivity Image (Wi-Fi network connection example)
Server Error
NHL-3FB1
Access Point
Wi-Fi Network
Get the status condition and control the Signal Tower.

* A Wi-Fi environment is needed for this application.

"Signal Tower app" is an application software exclusively to be used with the Network Monitor Signal Tower "NHL-3FB1". PATLITE is registered trademarks of PATLITE Corporation. Apple and iPhone are registered trademarks of Apple Inc.



Combining the NHL with the "Signal Tower app", it can be used to "time" a presentation or lecture.

PATLITE Corporation

International Division
8-8, Matsuyamachi, Chuo-ku, Osaka, Japan 542-0067 TEL.+81-6-6763-8220 FAX.+81-6-6763-8221

PATLITE (U.S.A.) Corporation
20130 S. Western Ave., Torrance, CA 90501, U.S.A TEL.+1-310-328-3222 FAX.+1-310-328-2676

PATLITE Europe GmbH
Am Soeldnermoos 8, D-85399 Hallbergmoos, Germany TEL.+49-811 9981 9770-0 FAX.+49-811 9981 9770-9

PATLITE (SINGAPORE) PTE LTD
No.2 Leng Kee Road, #05-01 Thye Hong Centre, Singapore 159086 TEL.+65-6226-1111 FAX.+65-6324-1411

PATLITE (CHINA) Corporation
Room 512, Jufeng Business Building, No.697-3 Lingshi Road, Shanghai China 200072 TEL.+86-21-6630-8969 FAX.+86-21-6630-8938

PATLITE KOREA CO., LTD.
202 Seokwang Bldg. 1361-9 Seocho-dong, Seocho-gu, Seoul, 137-863 Korea TEL.+82-2-523-6636 FAX.+82-2-523-6637

http://www.patlite.com E-mail: overseas@patlite.co.jp

1244A 1107 E(E)/(NP)A

CAUTION

To ensure correct use of these products, read the "Instruction Manual" prior to use. Failure to follow all safeguards can result in fire, electric shock, or other accidents. Specifications are subject to change without notice.

*Since the size, specification, pricing, etc. stated may be changed in the catalog without preliminary announcement, please be sure to check for the newest information regarding the specifications, etc. *The items not attached, other than the wire cord in a wiring diagram, fuse, screw, etc. are not included, except what has been specifically mentioned. *The performance mentioned in this catalog may not meet some installation requirements. *The color tone of the product may differ due to the printing of this material. *Construction costs are not included in the pricing. *This catalog uses environmentally friendly soybean oil ink. *This catalog uses recycled paper. *All pictures found in this catalog are image compositions. *PATLITE is registered trademarks of PATLITE Corporation.



For the benefit of mankind and the earth, Patlite is committed to developing environmentally friendly products.

PATLITE Corporation

The new look for a Network Monitor

Signal Tower Network Monitor Signal Tower
For Network & Security Solutions NHL-3FB1U-RYG / NHL-3FB1N-RYG

Stylish for the Office A Refined Design

In a simple off-white color design, it makes the undertone harmonious with the interior design or surrounding equipment. The simple design melds with the space easily, and as an information display, its distinguished presence is demonstrated when the lights are out.



The LED luminescence with two different flashing patterns

Visibility is enhanced with an effective and unique diffused reflection mirror, lens cut globe, and high-intensity LED unit, to display the high-prioritized information. Using an abundant luminescence pattern, it is possible to report in correspondence to the event.

Useful in Various Environments

It can be used in various environments with the various brackets.



It is useful when placed on a flat surface. It also includes screws to fix onto the underside of the Body.

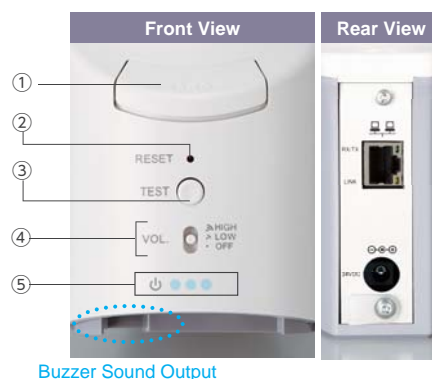
The Body can be attached to the surface of a wall. The product can be mounted facing either the right or left sides.

Depending on the thickness, two different bolting screws will enable attachment to a large or small partition.

Easily operable with the highly manageable switches

The switch on the front can easily perform various operations.

- ① Clear Switch: The Signal Tower flashing, lighting, and buzzer are stopped, and it returns to its normal operation.
- ② Reset Switch: Reboots the product when it is necessary.
- ③ Test Switch: The Signal Tower lighting, and buzzer can be tested by pressing the switch.
- ④ Volume Set Switch: The buzzer volume has two set levels and an "OFF" position.
- ⑤ Status Lamp: The operation condition is indicated with a blue LED lamp.



Buzzer Sound Output

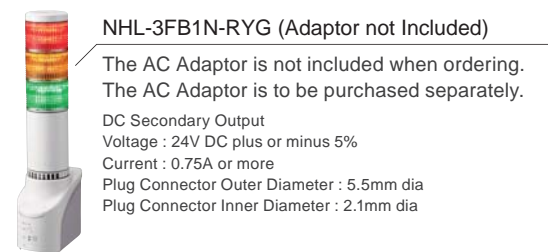
Four Buzzer Sounds

Four kinds of buzzer sounds are available to set according to the desired priority of the monitoring function.
(Slow Intermittent) (Fast Intermittent) (Fast Burst) (Continuous)

2 Model Selections Available



NHL-3FB1U-RYG (Adaptor Included)
The AC Adaptor is included when ordering.



NHL-3FB1N-RYG (Adaptor not Included)
The AC Adaptor is not included when ordering. The AC Adaptor is to be purchased separately.
DC Secondary Output
Voltage : 24V DC plus or minus 5%
Current : 0.75A or more
Plug Connector Outer Diameter : 5.5mm dia
Plug Connector Inner Diameter : 2.1mm dia



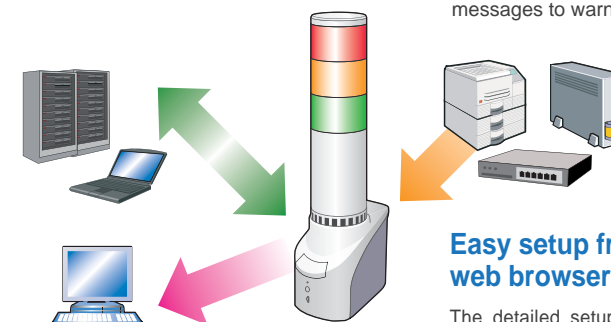
Easy to integrate for a broad range of applications

PING Device Monitor

Monitors Device Existence on the Network

Each NH Tower initiates PING interaction for up to 24 network devices. When a PING response fails, light/sound signaling occurs to warn administrators.

Among the 24 nodes, four nodes (21st to 24th) can be set up for more detailed monitoring parameters.



Application Monitor

The tower can monitor important background applications and signal the administrator upon any failure.

SNMP v1·v2c

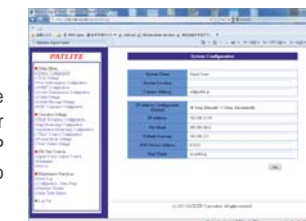
Monitor networking equipment at a low cost

Many network devices (UPS, printers, routers, switches, etc.) generate SNMP TRAP messages when a failure occurs. The NH tower can trigger light/sound signaling based on these messages to warn the administrator.

- It can distinguish the variable bindings.
- Registration of 16 groups (4 nodes per group) is possible.

Easy setup from a web browser

The detailed setup for the Body can be accessed over a web browser to its IP address. Firmware can also be upgraded remotely.

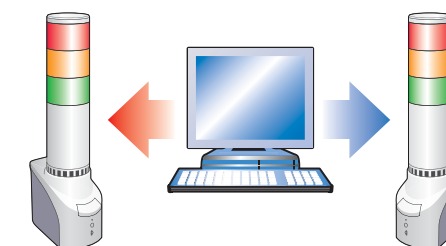


Web Setup Screen

It offers ample amounts of communication commands

RSH

It is easily controllable by RSH commands, which is a flexible protocol. Network integrated management software and event information, including various monitor tools etc., are turned into a trigger to cause lighting, flashing, and the buzzer to sound in synchronicity with the light of the Signal Tower.



Event Occurrence: Command (Lighting Tier, Sounding Buzzer)
RSH Example Code : rsh 192.168.10.1 -l root alert 111001

SOCKET Transmission

PHN Command Compatibility

It is controllable with 2 byte commands.
※ Compatible with NHE-3FB, NHC-3FB, NHM-3FB, and PHN-3FBE1.
※ Some functions are limited.

Event Occurrence:
Command (Lighting Tier, Sounding Buzzer)
PHN Example Code: 0x57,0x17

New PNS Command Compatibility

By using the PNS command, control of all pattern information is attainable.
※ The PNS command is a unique command from PATLITE.

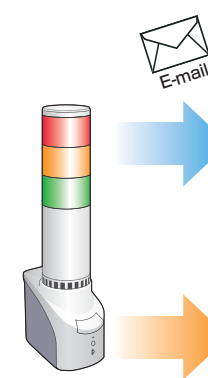
Event Occurrence: Command (Lighting Tier, Sounding Buzzer)
PNS Example Code: 0x58,0x58,0x53,0x00,0x00,0x06,0x01,0x01,0x01,0x00,0x00,0x01

Has Diagnostic / Reporting set function

E-mail Transmission

Send e-mail with a maximum of eight events (selectable)

The subject name and text corresponding to a diverse event can be created. It exceeds in the complete e-mail authentication function securely.



SNMP v2c

SNMP TRAP Transmission

Can transmit from a maximum of eight locations.

Self-diagnosis



The test switch on the front of the Body can check the Signal Tower and buzzer operation functions easily without it being controlled through the network.